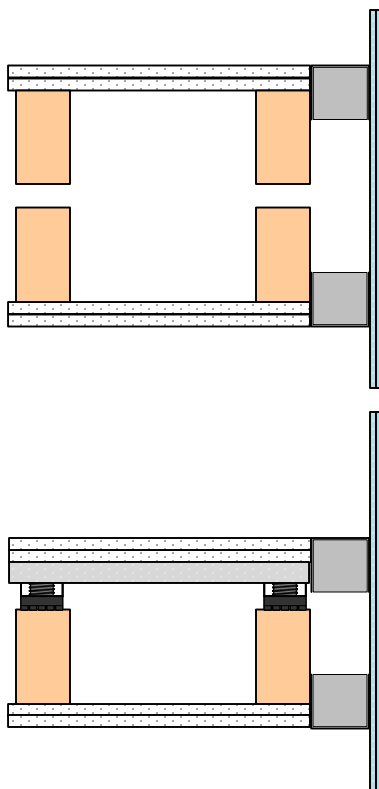




**PAC-AMS, A Low Cost, High
Performance,
Noise control Solution**



PAC-AMS

The **PAC-AMS** series is designed for use when an acoustical seal is needed to fill a gap between the wall and glass, or wall and mullion. The PAC-AMS is designed to fit slightly compressed to hold itself up in a cavity. The PAC-AMS is acoustically tested up to an STC 72. The PAC-AMS is available in several silicone colors from Dow or Sika. The PAC-AMS is sold in 6' 6" and 9' 10" ft lengths. The PAC-AMS does not require adhesive when installed.

| |
|------------------|
| Wood - Steel |
| Apartment |
| Commercial |
| Conference Rooms |

| |
|--------------------|
| Condo |
| Recording Studio |
| Home Theater |
| Commercial theater |

PAC-AMS specifications:

| | |
|-------------------------|-----------------|
| Acoustical performance: | STC 53 to 72 |
| 2 Sided | Yes |
| 3 Sided | Yes |
| Cavity min | 1/2" |
| Cavity Max | 8" |
| Length | 6' 6" or 9' 10" |
| Use on Vertical joints | Yes |
| Use on Walls | No |
| New Construction | Yes |
| Retro-fit Construction | Yes |
| Assembled In USA | Yes |



QuietJoint

US Patent Pending

DISTRIBUTED BY:

PAC

International

World Leader in Noise Control Solutions

INSTALL DATA

Installation Materials

To aid in installation the following are recommended:

- Tape measure
- Bread Knife (if cutting is necessary)
- Water spray bottle
- Rigid plastic spatula or plastic trowel

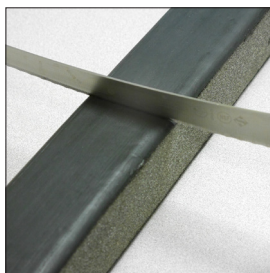
Step 1: Joint Prep

- Ensure joint faces are parallel and have sufficient depth to receive the full depth of the size(s) of QuietJoint being installed plus at least 1/4-inch (6mm).
- Remove residues of existing material.
- Wipe joint faces to ensure joint sides are free of dust, previous sealant, oils, grease, etc.



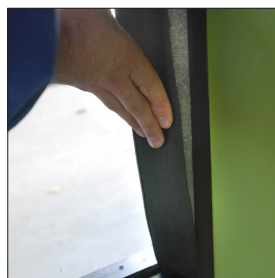
Step 2: Size and Adjust Lengths

- Measure the widths of openings and match to appropriately sized QuietJoint.
- Measure the length of openings to receive QuietJoint. Using a bread-knife, or finely serrated knife, cut the QuietJoint to the appropriate length plus 1/2-inch (12mm).



Step 3: Insert QuietJoint into Gap

- Starting at the bottom of the gap, insert the length of QuietJoint.
- Hand compress as needed to ease the installation.
- Work evenly up the length to obtain a consistent insertion.
- *Tip: Lightly wet the sides of the QuietJoint which come in contact with the wall or window with water, if necessary, to facilitate the insertion.*



Step 4 Recess Quiet Joint:

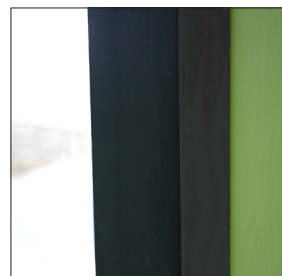
- When properly installed the face of QuietJoint should be recessed slightly or flush with the outer edge of the mullion or wall.



- With a plastic spatula or trowel* turn in the edges of the silicone face so that they remain snug and do not allow for the foam to be exposed. (*metal tools could scratch the substrate).



- QuietJoint will expand and be held in place by the backpressure of the foam.





BUILDING TRUST



PRODUCT DATA SHEET

QuietJoint®

Mass-Loaded Acoustic Partition Closure

DISTRIBUTED BY:



QuietJoint SHH coated two-sides
QuietJoint SHG coated three-sides

Product Description

QuietJoint by Sika Emseal is a sound, draft, heat, cold, and dust blocking acoustic partition closure and joint filler for interior, non-moving joints and gaps.

It is a non-mechanical, high-STC (Sound Transmission Class), non-invasively anchored closure that quickly and easily mates partitions to windows, mullions, or stud walls. QuietJoint also blocks sound transmission between rooms.

This product is colorized*, versatile, and ideally suited as a closure for gaps between the ends of permanent, semi-permanent, or movable partitions, window-wall, curtain-wall, head-of-wall and other conditions.

QuietJoint features a mass-loaded fire-resistant foam core coated with commercial-grade silicone. The foam core is a custom-density open-cell foam infused with a fire-resistant, acrylic-based mass-loading agent.

Uses and Applications

- End of partition to mullion (SHH 2-sided coating)
- End of partition to window (SHG 3-sided coating)
- End of partition to wall (SHH)
- Head of wall (SHH)
- To block any flanking path
- To fill construction-created voids and gaps

Colors

- Available in many industry standard colors
- Custom colors
- 3-sided SHG is manufactured with the same color on all three sides.
- *QuietJoint is also available in a paintable STPE sealant coating in a single neutral "limestone" color ideal for accepting latex and acrylic paints and coatings on the exposed face.

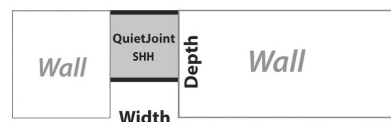
Features

- Mass-loaded acoustic seal (STC-53, OITC-38, ASTM E-90)
- Fire-resistant (Smoke and Flame Spread Class A, ASTM E-84-12)
- **Insulates** (R-value 2.85/in depth, ASTM C-518-04)
- **Sound attenuating**
- Non-mechanical
- Non-metallic
- Rapid installation--new or retrofit
- Non-invasive anchoring
- Practical and versatile
- Easily handles curves
- Helps control HVAC balance between rooms

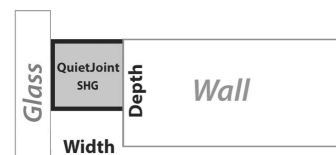
Material Configuration

QuietJoint comes coated on either 2 sides (SHH) or 3 sides (SHG).

SHH (two-sided silicone or paintable STPE) is ideal for gaps between opaque or solid partitions, walls or mullions.

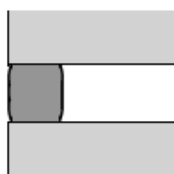


SHG (three-sided silicone or paintable STPE) is typically used to fill gaps between the glass of curtainwall or windows on one side and solid substrates on the other. The third coating aesthetically covers the foam core so that the foam is not visible from the outside through the glass.



Sound Attenuation

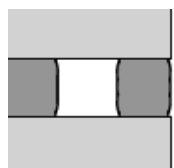
Independent laboratory tested to control passage of air-borne sound.



2" (50mm) standard depth
One side of wall only

STC 53
OITC 38

**When tested in a STC 56 (OITC 38) wall*



2" (50mm) standard depth
Both sides of wall

STC72
OITC 60

**When tested in a STC 72 (OITC 61) wall*

Independent laboratory tested to ASTM E90-09, "Standard Test Method for Laboratory Measurement of Airborne Sound Transmission Loss of Building Partitions and Elements".

Insulation Value

QuietJoint helps to control HVAC balance and energy loss between rooms.

The **R-value** of QuietJoint foam is R-2.848/inch of depth.

Depending on the joint size and related depth, the R-value of the material will be:

| Material | R-Value (Installed one side of joint) | R-Value (Installed both sides of joint) |
|---|--|--|
| 1" to 4 3/4" width with 2" depth (25mm to 120mm with 50mm depth) | 5.696 | 11.39+ * |
| 5" to 6" width with 3" depth (125mm to 150mm with 75mm depth) | 8.544 | 17.09+ * |

**Assumes installation from both sides of the wall thereby doubling the R-value. The inclusion of an air gap between the two pieces of QuietJoint will add additional insulation, effectively more than doubling the R-value.*

Independent laboratory tested to ASTM C518-04 "Standard Test Method for Steady-State Thermal Transmission Properties by Means of the Heat Flow Meter Apparatus".

EMSEAL JOINT SYSTEMS, LTD
25 Bridle Lane
Westborough, MA 01581 USA
Phone: 508.836.0280
Fax: 508.836.0281
www.emseal.com

EMSEAL, LLC
111 Royal Group Crescent
Woodbridge, ON L4H 1X9 Canada
Phone: +1-416-740-2090
Fax: +1-416-740-0233
www.emseal.com

Standard Sizes

Available in 1/4-inch increments for field-measured joint opening widths of 1-inch (25mm) to 6-inch (150mm). Supplied as either 6.56-foot (2M) or 10-ft (3M) length [which allows installation in most locations without any joins]. When QuietJoint is supplied in full-story, 10-foot (3-meter) lengths, it is shipped in loosely laid coils inside a cardboard box.

| Joint Widths | Depth of Seal |
|-------------------------|---------------|
| 1" - 4.75" (25 - 120mm) | 2" (50mm) |
| 5" - 6" (125 - 150mm) | 3" (75mm) |

Installation Overview

QuietJoint is supplied slightly larger than the field-measured joint gap. Being careful not to stretch it, the material is laid out and cut to the desired length. QuietJoint is positioned over the joint opening and squeezed by hand to ease it into the joint. The silicone coating folds at its edges to absorb slight variations in substrates while maintaining a smooth appearance. Once in desired location, a plastic putty knife is used to tuck the edges of the silicone against the substrates to remove any wrinkles. The internal backpressure of the material mates it to the mullion or other joint faces. In higher end finish applications QuietJoint can be installed behind finish trim (by others) to achieve a desired aesthetic.

Performance Limitations

Overcompressing QuietJoint can result in backpressure that could exceed the ability of certain substrates to resist this pressure. User is assumed to have tested all applications to ensure suitability for use.

Not intended for use in moving joints. Not trafficable. For watertight, moving structural joint gaps contact EMSEAL for product selection.

Availability & Price

QuietJoint is available for shipment internationally. Prices are available from local representatives and/or directly from the manufacturer. The product range is continually being updated, and accordingly EMSEAL® reserves the right to modify or withdraw any product without prior notice.

Product Data Sheet
Emseal QuietJoint
May 2022 Version SE-1.0



BUILDING TRUST





RSIC-1
RSIC-SI-X
RSIC-SI-X ADM
RC-1 Boost
PAC-RCB
RSIC-SI-1 Ultra
RSIC-SI-CRC EZ
RSIC-SI-WHI
RSIC-SI-FF
RSIC-1 EXT04
RISC-1.5 CRC
RSIC-1 Low Profile
RSIC-1 Edge
RSIC-1 TTC
RSIC-1 Retro
RSIC-1 Backer
RSIC-1 ADM
RSIC-U
RSIC-U-HD
RSIC-WFI
RSIC-FGP
RSIC-DC04
RSIC-DC04 HD/DD
RSIC-DC04X2
RSIC-DC04X2 HD/DD
RSIC-V
RSIC-2
RSIC-2 Retro
RSIC-CWB
RSIC-CWB HD/DD
RSIC-CWB HD/DD DC
RSIC-Joist Isolator
RSIC-GDS Kit
RSIC-AMI
RSIC-FS TV
RSIC-Perimeter Tape
RSIC Super Screw
RSIC-Putty Pad
RSIC-Multi Clip
RSIC-FRC-HD
PAC-IFB

Safety Data Sheet

Article Statement

(PAC International, LLC Wall and Ceiling Isolation Products)

This document is provided for clarification of the Safety Data Sheets that you have requested for our product(s). OSHA Hazard Communication Standard requires a SDS for hazardous chemicals; however, the standard exempts all articles from the requirement. The explanation of an article is described per OSHA definition below.

Pursuant to 29 CFR 1910.1200 (b) (6) (v) and (c), the product described herein is an “article” or is otherwise excluded from OSHA regulations requiring that a Material Safety Data Sheet be prepared for it.

An article defined: manufactured item other than a fluid or particle: (i) which is formed to a specific shape or design during manufacturing; (ii) which has an end use function (s) dependent in whole or in part upon its shape or design during end use; and (iii) which does not release, or other wise result in exposure to, a hazardous chemical under normal conditions of use.

For technical information and additional resources covering these products please refer to PAC International published literature, e.g., data sheets, product drawings, and installation guidelines at www.pac-intl.com

As of the date of this document, the foregoing information is believed to be accurate and is provided in good faith to comply with applicable federal and state laws. However, no warranty or representation of law or fact, with respect to such information, is intended or given.



**World Leader in
Noise Control
Solutions**

RSIC-1
RC-1 Boost
PAC-RCB
RSIC-SI-1 Ultra
RSIC-SI-CRC EZ
RSIC-SI-WHI
RSIC-SI-FF
RSIC-SI-X
RSIC-1 EXT04
RISC-1.5 CRC
RSIC-1 Low Profile
RSIC-1 Edge
RSIC-1 TTC
RSIC-1 Retro
RSIC-1 Backer
RSIC-1 ADM Multi Clip/Shoot In
RSIC-1 ADM Mini Drop In
RSIC-1 ADM Wood
RSIC-U
RSIC-U-HD
RSIC-WFI
RSIC-FGP
RSIC-DC04
RSIC-DC04 HD/DD
RSIC-DC04X2
RSIC-DC04X2 HD/DD
RSIC-V
RSIC-FCR-HD
RSIC-2
RSIC-2 Retro
RSIC-CWB
RSIC-CWB HD/DD
RSIC-CWB HD/DD DC
RSIC-Joist Isolator
RSIC-GDS Kit
RSIC-AMI
RSIC-FS TV
RSIC-Perimeter Tape
RSIC Super Screw
RSIC-Putty Pad
RSIC-Multi Clip
RSIC-FCR-HD

RSIC Product Warranty Disclaimer

WARRANTY DISCLAIMER AND LIABILITY LIMITATION LANGUAGE

NO EXPRESS OR IMPLIED WARRANTIES

THERE IS NO WARRANTY, REPRESENTATION OR CONDITION OF ANY KIND; AND ANY WARRANTY, EXPRESS OR IMPLIED, IS EXCLUDED AND DISCLAIMED, INCLUDING THE IMPLIED WARRANTIES OF MERCHANTABILITY AND OF FITNESS FOR A PARTICULAR PURPOSE. Some states do not allow limitations on implied warranties, so the above limitation may not apply to you.

LIABILITY LIMITED TO RETURN OF PURCHASE PRICE

IT IS AGREED THAT SELLER'S LIABILITY AND PURCHASER'S SOLE REMEDY, WHETHER IN CONTRACT, UNDER ANY WARRANTY, IN TORT (INCLUDING NEGLIGENCE), IN STRICT LIABILITY OR OTHERWISE, SHALL NOT EXCEED THE RETURN OF THE AMOUNT OF THE PURCHASE PRICE PAID BY PURCHASER, AND UNDER NO CIRCUMSTANCES SHALL SELLER BE LIABLE FOR ANY SPECIAL, INCIDENTAL OR CONSEQUENTIAL DAMAGES, INCLUDING, BUT NOT LIMITED TO, PERSONAL INJURY, PROPERTY DAMAGE, DAMAGE TO OR LOSS OF EQUIPMENT, LOST PROFITS OR REVENUE, COSTS OF RENTING REPLACEMENTS AND OTHER ADDITIONAL EXPENSES, EVEN IF SELLER HAS BEEN ADVISED OF THE POSSIBILITY OF SUCH DAMAGES. THE PRICE STATED FOR THE EQUIPMENT IS A CONSIDERATION IN LIMITING SELLER'S LIABILITY AND PURCHASER'S REMEDY. Some states do not allow the exclusion or limitation of incidental or consequential damages, so the above limitation or exclusion may not apply to you.

SELLER NOT LIABLE FOR PURCHASER'S NEGLIGENCE

SELLER WILL NOT BE LIABLE FOR ANY DAMAGES, LOSSES OR EXPENSES AS A RESULT OF PURCHASER'S NEGLIGENCE, WHETHER DEEMED ACTIVE OR PASSIVE AND WHETHER OR NOT ANY SUCH NEGLIGENCE IS THE SOLE CAUSE OF ANY SUCH DAMAGE, LOSS OR EXPENSE.

MODEL FOR DEMONSTRATION PURPOSES ONLY

THE MODEL OR SAMPLE SHOWN BY SELLER TO BUYER IS USED FOR DEMONSTRATION PURPOSES ONLY. THERE IS NO WARRANTY THAT THE GOODS AS DELIVERED SHALL CONFORM TO THE MODEL OR SAMPLE, AND CONFORMITY OF THE GOODS TO THE MODEL OR SAMPLE IS NOT PART OF THE BASIS OF THE BARGAIN BETWEEN SELLER AND BUYER.

NO WARRANTY OR COMPLIANCE WITH SAFETY CODE OR REGULATION

SELLER DOES NOT WARRANT THAT ANY OF THE GOODS SOLD WILL MEET OR COMPLY WITH THE REQUIREMENTS OF ANY SAFETY CODE, BUILDING OR DWELLING CODE, OR REGULATION OF ANY STATE, MUNICIPALITY OR OTHER JURISDICTION.

NEVADA LAW APPLIES

SELLER AND BUYER AGREE THAT ALL ASPECTS OF THIS TRANSACTION INCLUDING THE APPLICABLE STATUTE OF LIMITATIONS SHALL BE GOVERNED BY THE INTERNAL LAW OF THE STATE OR NEVADA, AND NOT THE LAWS OF CONFLICTS.

This warranty gives you specific legal rights, and you may also have other rights which vary from state to state